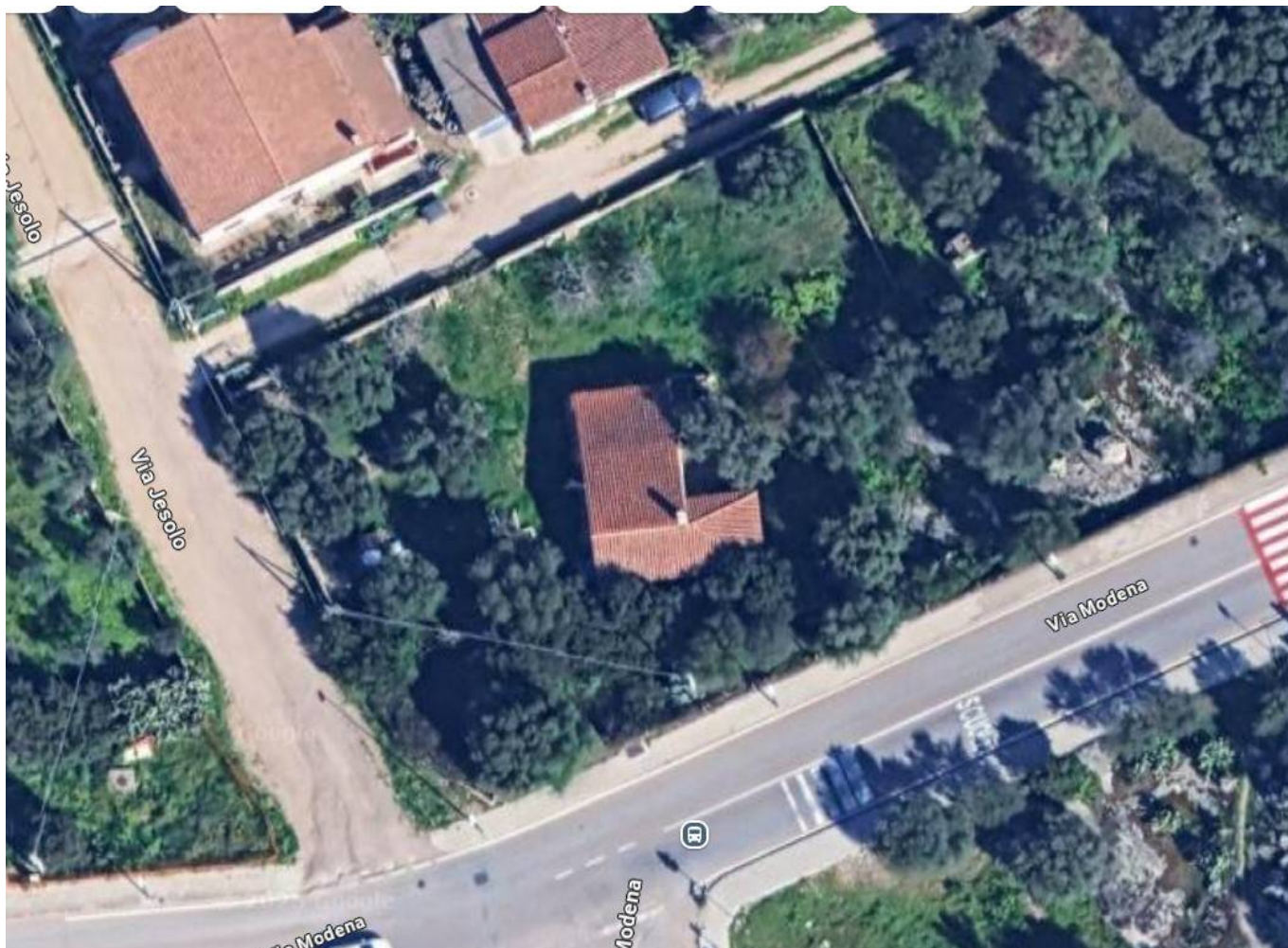


Land a Olbia Zona Poltu Quadu € 295.000 Ref. 1002-jesolo



1.100 sq.m

Olbia | Unique Real Estate Development Opportunity with a Sea View

Transform the future of Olbia's waterfront. We offer for sale a strategic lot with direct concession, complete with a pre-defined design proposal for the construction of a modern, streamlined building with a contemporary design.

The Project: Elegance and Profitability

The building was designed to maximize the value of every square meter, featuring 11 high-profile real estate units:

8 Two-Room Apartments: Ideal for the tourist rental market or young professionals.

2 Large Three-Room Apartments: Perfect for prestigious primary residences.

1 Super Exclusive Penthouse: The jewel in the crown, with private pool and solarium.

Unparalleled Plus: From the first floor alone, the building offers an unmissable sea view over the entire Gulf of Olbia.

Strategic Location and Urban Redevelopment

Located in a vibrant area undergoing a major municipal redevelopment plan, the property is just 250 meters from the sea. The project is part of a development that will soon see:

New panoramic cycle path.

Construction of a tourist marina a few steps away.

Double access on two roads for optimal construction site and access logistics.

Connections and Services at your fingertips:

Costa Smeralda Airport: 600 m (immediate global connection).

Olbia Mare Shopping Center: 500 m (maximum convenience).

Sea and Future Port: 250 m.

Conditions of Sale

The lot currently houses a small existing building and is ready to be transformed.

Services: All connections are already present on the lot.

Exchanges: We are interested in exchanging properties for existing ones.

Don't miss out on this high-yield real estate transaction in one of Sardinia's most dynamic areas.

Contact us today to view the plans and arrange a technical inspection.

Property Informations

Address: via jesolo

Zip Code: 7026

Buildable sq.m.: 1.100 sq.m

Features

Divisible Lot

Street Frontage

Water Pipes

Methane

Nearby

Bike Lanes

Public Transport

Shopping Centers

Municipal Offices

